

AH Series 15" Two-Way Stadium Horns



The popular AH Series from Atlas Sound was recently expanded to include two new models, the **AH9040CD** and **AH6565CD**. Complementing the previously released **AH5040CD** model, the AH Series now offers the most often requested coverage patterns in the industry while providing excellent intelligibility for some of the most challenging environments.

All models offer unique features that make the AH family a perfect choice for applications such as large auditoriums, sports arenas, and baseball fields. The **AH9040CD** is optimized to provide a shorter throw and wider coverage (90° H X 40° V) for applications like bleacher seating where the speaker may be in close proximity to the crowd. The **AH6565CD** offers a square coverage pattern (65° H X 65° V) perfect for down-firing applications like convention centers. The **AH5040CD** offers a tight, yet effective dispersion (50° H X 40° V) specifically for long throw applications like race tracks and football stadiums. All three models feature extreme high output, outstanding pattern control, and amazing low frequency response.

AH models, feature impressive full range frequency response provided by a 15" low frequency woofer and a concentrically mounted 1" exit compression driver providing frequency response from 80Hz to 15kHz (±5dB). A highly efficient internal passive crossover network ensures proper transition between the two (2) drivers.

With an efficiency rating in excess of 102dB (1 Watt/1 Meter), the AH Series is a perfect choice for high energy music playback at sporting events as well as extended range speech reinforcement.

Weather and pest resistance is accomplished by multiple mesh screens over drivers and horn openings.

Heavy duty mounting brackets are included with all models. For light pole or scoreboard mounting, contact the scoreboard/pole manufacturer for correct hardware and safe installation. Three (3) drop forged eyebolts are also included for overhead suspension (use only load-rated & approved hardware). Two (2) parallel 4-pole Speak-on™ connectors are included on the rear of the horn for easy connections.

Specification	AH5040CD	AH6565CD	AH9040CD
Freq. Response (±5dB)	75Hz-14.5kHz	75Hz-14.5kHz	75Hz-14.5kHz
Power Handling	250 Watts	250 Watts	250 Watts
Sensitivity 1W/1M, 2.83 V Ref	104dB	102dB	102.5dB
Maximum Output (dB SPL)	127dB	126dB	126.5dB
Impedance	8Ω nominal, 5.6Ω @ 9kHz min.	8Ω nominal, 5.6Ω @ 9kHz min.	8Ω nominal, 5.6Ω @ 9kHz min.
Nominal -6dB Beamwidth	50°H x 40°V	65°H x 65°V	90°H x 40°V
Dimensions (H x W x Depth)	H: 20.5" (521mm), W: 20.5" (521mm), D: 32" (813mm)	H: 20.5" (521mm), W: 20.5" (521mm), D: 32" (813mm)	H: 22.5" (572mm), W: 30" (762mm), D: 31" (787mm)



NEW



CTI



AH5040CD

NEW



CTI



AH9040CD

AH SERIES WOOFER



A perfect complement to any AH Series full range device, the **AH15SUBS** will provide extended low frequency response to add presence to any high energy music playback system. A specially designed, rear firing 15" cast frame woofer is mounted into a high volume chamber for optimum loading and output. These design elements provide an impressive frequency response down to 55Hz (-5dB) for accurate bass response. The AH15SUBS is capable of handling up to 250 Watts RMS providing output in excess of 126dB (Rated power @ 1 Meter). Three (3) eyebolt suspension points are provided along with mounting locations to allow stacked installation of other AH models. A standard 1-1/2" socket is also provided to allow pole mounting of AH 8" or 12" models above the AH15SUBS for portable applications. Available Q3 2006.

Specification	AH15SUBS
Freq. Response (±5dB)	55Hz-120kHz
Power Handling	250 Watts RMS
Sensitivity 1W/1M, 2.83 V Ref	103dB
Maximum Output (dB SPL)	127dB
Impedance	8 Ohms
Dimensions (H x W x Depth)	H: 30.56" (776mm), W: 30" (762mm), D: 28.10" (714mm)

NEW



CTI

AH15SUBS



AH Series 15" Stadium Loudspeakers

NEW



The AH Series offers the most often requested coverage patterns while providing excellent intelligibility for even the most challenging environments. All models offer unique features that make the AH family a perfect choice for applications such as large auditoriums, sports arenas, and baseball fields-for shorter loudspeaker to listener distances and/or wider coverage requirements. 90° H X 40° V models are available for applications such as bleacher seating where the speaker may be in close proximity to the crowd. Square coverage pattern (65° H X 65° V) models are perfect for down-firing applications including convention centers. For tight, yet effective dispersion 50° H X 40° V models are designed specifically for long throw applications like race tracks and football stadiums. With a complete family of 8", 12", and 15" 2-way systems, designers and specifiers can select models for whatever SPL is required with the peace of mind that all units will provide outstanding pattern control.

Weather and pest resistance is accomplished by multiple mesh screens. A primary rodent screen provides protection for all components, a secondary screen resides between the high

frequency horn and the driver, and a 3rd perforated screen protects the woofer.

Heavy duty stainless steel mounting brackets are included with all models. Optional pole mount accessories available – contact Atlas Tech Support @ 800.876.3333 for details. Three (3) drop forged eyebolts are also included for overhead suspension (use only load-rated & approved hardware).

The new **AH5040S**, **AH9040S**, and **AH6565S** loudspeakers from Atlas Sound retain all of the popular features of previous models with the addition of stainless steel mounting hardware. Available Q3 2006.

AH models, feature impressive full range frequency response provided by a 15" low frequency woofer and a concentrically mounted 1" exit compression driver providing frequency response from 80Hz to 15kHz (±5dB). A highly efficient internal passive crossover network ensures proper transition between the two (2) drivers.

With an efficiency rating in excess of 102dB (1 Watt/1 Meter), the AH Series is a perfect choice for high energy music playback at sporting events as well as extended range speech reinforcement.

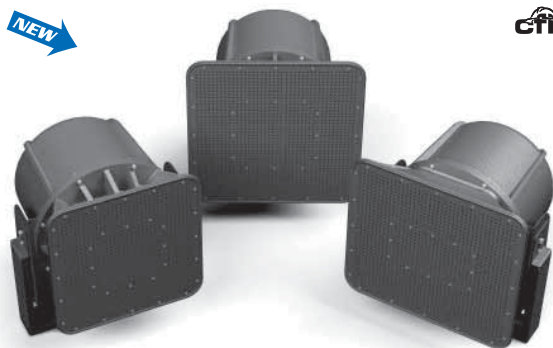
Two (2) parallel 4-pole Speak-on™ connectors are included on the rear of loudspeaker for easy connection.

Specification	AH5040S	AH6565S	AH9040S
Freq. Response (±5dB)	75Hz-14.5kHz	75Hz-14.5kHz	75Hz-14.5kHz
Power Handling	250 Watts	250 Watts	250 Watts
Sensitivity 1W/1M, 2.83 V Ref	104dB	102dB	102.5dB
Maximum Output (dB SPL)	127dB	126dB	126.5dB
Impedance	8Ω nominal, 5.6Ω @ 9kHz min.	8Ω nominal, 5.6Ω @ 9kHz min.	8Ω nominal, 5.6Ω @ 9kHz min.
Nominal -6dB Beamwidth	50°H x 40°V	65°H x 65°V	90°H x 40°V
Dimensions (Height x Width x Depth)	H: 20.5" (521mm), W: 20.5" (521mm), D: 32" (813mm)	H: 20.5" (521mm), W: 20.5" (521mm), D: 32" (813mm)	H: 22.5" (572mm), W: 30" (762mm), D: 31" (787mm)

AH Series 8" & 12" Stadium Loudspeakers



NEW



The **AH99-12ST**, **AH94-12ST**, **AH66-12ST** (available Q3 2006) 12" 2-way models are perfect for applications where space considerations will not allow installation of larger 15" 2-way models.

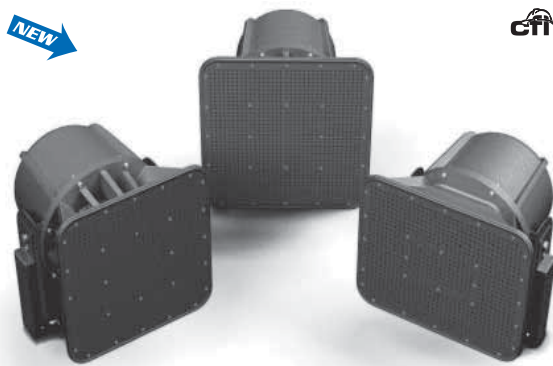
The 12" 2-way AH models feature a version of the popular 12CXT60 compression driver coaxial loudspeaker which provides frequency response from 80Hz to 10kHz (± 5 dB). A highly efficient internal passive crossover network ensures proper transition between the two (2) drivers. A 60W, 70.7V/100V internal transformer is terminated to a terminal block connector with a weather resistant cover. Transformer may also be bypassed for direct coupled 8 Ohm operation.

With an efficiency rating in excess of 102dB (1 Watt/1 Meter), the 12" AH Series is a perfect choice for extended range speech reinforcement as well as music playback.

Heavy duty stainless steel bracket assembly and three (3) forged eyebolts for suspension are included.

Specification	AH99-12ST	AH94-12ST	AH66-12ST
Freq. Response (± 5 dB)	80Hz-10kHz	80Hz-10kHz	80Hz-10kHz
Power Handling	200 Watts	200 Watts	200 Watts
Sensitivity 1W/1M, 2.83 V Ref	103dB	103dB	102dB
Maximum Output (dB SPL)	126dB	126dB	125dB
Transformer Taps @ 70.7V	7.5, 15, 30, and 60W	7.5, 15, 30, and 60W	7.5, 15, 30, and 60W
Nominal -6dB Beamwidth	90°H x 90°V	90°H x 40°V	65°H x 65°V
Dimensions (Height x Width x Depth)	H: 25.65" (652mm), W: 22.06" (560mm), D: 21.25" (540mm)	H: 25.65" (652mm), W: 22.06" (560mm), D: 21.25" (540mm)	H: 23.86" (606mm), W: 21.41" (544mm), D: 21.25" (540mm)

NEW



The **AH99-8ST**, **AH94-8ST**, and **AH66-8ST** (available Q3 2006) compact 8" 2-way models will work quite well in any surface mount application including down firing for convention center or other meeting spaces.

The 8" 2-way AH models feature a version of the popular 8CXT60 compression driver coaxial loudspeaker which provides frequency response from 90Hz to 10kHz (± 5 dB). A highly efficient internal passive crossover network ensures proper transition between the two (2) drivers. A 60 W, 70.7V/100V internal transformer is terminated to a terminal block connector with a weather resistant cover. Transformer may also be bypassed for direct coupled 8 Ohm operation.

With an efficiency rating in excess of 100dB (1 Watt/1 Meter), the 8" AH Series is a perfect choice for extended range speech reinforcement as well as background music playback in applications.

Heavy duty stainless steel bracket assembly and three (3) forged eyebolts for suspension are included.

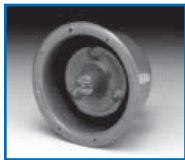
Specification	AH99-8ST	AH94-8ST	AH66-8ST
Freq. Response (± 5 dB)	90Hz-10kHz	90Hz-10kHz	90Hz-10kHz
Power Handling	100 Watts	100 Watts	100 Watts
Sensitivity 1W/1M, 2.83 V Ref	101dB	101dB	100dB
Maximum Output (dB SPL)	121dB	121dB	120dB
Transformer Taps @ 70.7V	7.5, 15, 30, and 60W	7.5, 15, 30, and 60W	7.5, 15, 30, and 60W
Nominal -6dB Beamwidth	90°H x 90°V	90°H x 40°V	65°H x 65°V
Dimensions (Height x Width x Depth)	H: 23.86" (606mm), W: 21.41" (544mm), D: 21.25" (540mm)	H: 21.83" (554mm), W: 19.66" (499mm), D: 18.41" (468mm)	H: 20.91" (531mm), W: 17.91" (455mm), D: 19.66" (499mm)



Professional Omni-Purpose Loudspeakers



AP-15/AP-30



APF-15



APC-30T



APR-30AT



APT-34AT

General Description: AP Series environment-resistant loudspeakers are the world standard for voice, music, and signal transmission in indoor and outdoor public address, intercom, security, and industrial signal system applications. Cost-effective, all-purpose units incorporate high-efficiency compression drivers to project through high ambient sound levels and to cover long distances at minimum installed cost. U.S.-made models assure superior intelligibility and service reliability. Weatherproof units are metal and plastic construction. AP Series transformer-equipped models now include a 3-way 25/70.7/100V transformer except Model AP-30T-25 which is 25V.

INDUSTRY STANDARD OMNI-PURPOSE LOUDSPEAKERS

AP-15/AP-30 Series. Patented environment-resistant, double re-entrant loudspeakers are available in 15 and 30 Watt versions for medium and high-powered sound distribution. Selection includes 4 Ohm models for auxiliary and mobile loudspeaker use, 45 Ohm models for intercom application, and 25/70.7/100 Volt transformer models with screwdriver-adjust power tap selection for a variety of sound and signaling applications. All include the Omni-Purpose® bracket for vertical/horizontal positioning and have provisions for surface/strap mounting to pillars and I-beams. Grey or beige (C) baked epoxy finish.

RECESSED FLANGE-MOUNTING LOUDSPEAKERS

APF Series. High-efficiency, 15 Watt loudspeakers are designed for recessed installation in sound and alarm system applications. Flange mounting units may be installed flush to a panel or recessed into wall or ceiling surfaces. For aesthetic consideration and retrofit convenience of existing cone loudspeaker installations, models will accept any 6" or 8" diameter recessed mounting baffle (Note: 8" baffle mounting requires model MK-2 mounting kit. See APF Series accessories, this section.) Model APF-15 installs inside a 4" deep opening. Model APF-15T fits inside a 5 1/2" deep minimum opening and includes combination 25/70.7/100 Volt transformer with screwdriver-adjust power tap selection. Finished in grey baked epoxy.

EXPONENTIAL LOUDSPEAKER

APC-30T. High-power 30 Watt loudspeaker with extended low frequency response is equipped with a wide-angle molded plastic bell for sound directivity. Transformer includes a screwdriver-adjust power selection with a 45 Ohm tap for intercom and talk-back use. It also features the Omni-Purpose® bracket for vertical/horizontal positioning and have provisions for surface/strap mounting to pillars and I-beams. Finished in grey baked epoxy. For constant directivity performance, see APX Series.

RADIAL LOUDSPEAKER FOR SUSPENSION MOUNTING

APR-30AT. 30 Watt loudspeaker with 40° circular sound dispersion is designed for overhead installation in industrial, transportation, manufacturing, service, recreation and sports centers. Equipped with a combination 25/70.7/100V transformer with screwdriver-adjust power selection including a 45 Ohm tap. Provision for suspended ceiling installation is included. Finished in grey baked epoxy. Includes conduit adapter. APR-30T does not include conduit adapter-order BX-1A if conduit it to be used.

BI-DIRECTIONAL TWIN HORN

APT-34T. Surface-mounting loudspeaker with bi-directional sound dispersion provides concentrated coverage in corridors, stairwells and walkways in commercial, institutional and industrial applications. Twin horn assembly delivers 30 Watts of power with a single compression driver and provides 100° sound dispersion in each direction. Includes the Omni-Purpose® bracket and provisions for surface/strap mounting. Equipped with a combination 25/70.7/100V transformer with screwdriver-adjust power selection including a 45 Ohm tap. Finished in grey baked epoxy. Includes conduit adapter.

MODEL	POWER RATING	NOMINAL FREQ.	SOUND LEVEL		DISPERSION**	IMPEDANCE	DIMENSIONS
			PEAK	RP/1M*, 1W/1M			
AP-15	15W	400Hz-14 kHz	120dB	116dB, 106dB 500-6000Hz ±5dB	70°	8 Ohm	7 1/8" W x 8 1/4" H x 9 1/16" D
AP-15T(C)						***	
AP-15-45						45 Ohm	
APF-15	15W	600Hz-14 kHz	120dB	114dB, 104dB 700-5500Hz ±5dB	95°	8 Ohm	7" Dia. x 3 1/8" H 7" Dia. x 5 1/8" H
APF-15T						***	
AP-30	30W	300Hz-12 kHz	126dB	121dB, 108dB 500-4500Hz ±5dB	60°	8 Ohm	10" W x 10" H x 10 1/2" D
AP-30T(C)						****	
AP-30T-25						*****	
APC-30T	30W	300Hz-12 kHz	122dB	119dB, 109dB 400-3000Hz ±5dB	70° x 95°	****	14 1/8" W x 8 1/4" H x 12 1/8" D
APC-30AT	30W	300Hz-12 kHz	125dB	120dB, 110dB 500-4000Hz ±5dB	40°	****	10 1/2" H x 9 1/4" Dia.
APT-34AT	30W	400Hz-12.5 kHz	119dB	112dB, 101dB 450-1250Hz ±5dB	175°	****	16 1/2" Lg. x 9 1/4" Dia

* Measured at Rated Power, 1 Meter (avg)

** Angle Shown for -6dB, 2kHz Octave Band

*** 15 Watt Xfmr. Power Taps: 25V: 48, 94, 1.8, 7.5, 15; 70.7V: 1, 2, 3.8, 7.5, 15; 100V: 2, 4, 7.7, 15, X

**** 30 Watt Xfmr. Power Taps: 25V: 0.9, 1.8, 3.7, 7.5, 15; 70.7V: 2, 3.8, 7.5, 15, 30; 100V: 4, 1.7, 15, 30, X

***** AP-30T-25 Xfmr. Power Taps: 25V: 1.2, 2.5, 5, 7.5, 15, 30



UL1480 general signaling models: AP-15, AP-15T, APF-15, APF-15T, AP-15TU, and APF-15TU.
UL1480 fire protective signaling models: AP-15TUC, AP-15TUCR, APF-15TUC.



HIGH-POWER RE-ENTRANT LOUDSPEAKERS

AP-15TU/APF-15TU Series. 15 Watt surface and flange mounting loudspeakers for life safety and communication system applications are designed for use with compatible control equipment to provide high-intelligibility voice and signal transmission in emergency alarm, protective signaling, sound and intercom system installations. AP-15TU(C)/AP-15TUCR Series are surface mounting units with Omni-Purpose® mounting bracket for vertical and horizontal positioning. Series also includes provisions for surface or strap mounting to pillars and I-beams. APF-15TU(C) Series are flange mounting units for recessed installation. All models include 25/70.7V Vari-Tap® transformer. Units with (C) suffix include 5-mfd capacitor for line supervision. Weatherproof construction. Finished in grey baked epoxy or red (R) as noted. Models comply with UL Standard 1480—Speakers for Fire Protective Signaling Systems and California State Fire Marshal (Title 19). Models with special modifications to meet New York City MEA (Calendar no. 57-74-SA) and UL Canada are also available as standard product. Contact factory.

MODEL	POWER RATING	NOMINAL FREQ.	SOUND LEVEL		DISPERSION**	IMPEDANCE	DIMENSIONS
			PEAK	RP/1M*, 1W/1M			
AP-15TU(C)	15W	400Hz-4kHz	102dB	116dB, 106dB	70°	***	7 7/8" W x 8 3/4" H x 9 9/16" D
AP-15TUCR				500-6000Hz ±5dB			
APF-15TU(C)	15W	400Hz-4kHz	102dB	114dB, 104dB	95°	****	7" Dia. x 5 1/16" H
				700-5500Hz ±5dB			

* Measured at Rated Power, 1 Meter (avg)

*** 15 Watt Xfmr. Power Taps: 25v: .48, .94, 1.8, 7.5, 15; 70.7v: 1, 2, 3.8, 7.5, 15

** Angle Shown for -6dB, 2 kHz Octave Band

**** UL Rating at 15 Watts, 10 ft. (3dB increment rating)



AP-15TUC



APF-15TUC

TWO

APX40TN



APX40TN. Conservatively rated 40 Watt, constant-directivity paging loudspeaker for use in public address or paging applications. Environment-resistant units feature a 60° x 40° (±10°) constant-dispersion pattern across the controlled frequency band of 1.25-10kHz. The rotating bell pivots in precise 15° increments for exact on-site positioning of projection angles. A triple lock security mounting method saves installation time and provides long-term stability. APX models are equipped with an internal 25/70.7/100V transformer with screw terminal connections made beneath the rear cap. Rear cap will facilitate armored cable. Power stripe code around the driver assembly provides identification of power rating from a distance. Loudspeaker mounts to die-cast zinc base. Pre-mount the base to a standard 1-gang, 2-gang, or 4" sq. E.O. box. If replacing AP Series speakers, simply remove the APX base and mount to the Omni-Purpose® bracket. Finish is neutral. Dimension: 14 1/2" W x 10 1/4" H x 13 1/4" D (368 x 260 x 337mm). Weight: 6 lbs. (2.7kg).

MODEL	POWER RATING	NOMINAL FREQ.	SOUND LEVEL		DISPERSION**	IMPEDANCE	DIMENSIONS
			PEAK	RP/1M*, 1W/1M			
APX40TN	40W	400 Hz-7.5kHz	124dB	120, 107dB	60° x 40°	***	14 1/2" W x 10 1/4" H x 13 1/4" D
				500-5500Hz ±5dB			

* Measured at Rated Power, 1 Meter (avg)

** Angle shown for -6dB, 2kHz Octave Band

*** 40 Watt Xfmr. Power Taps: 25v: .63, 1.25, 2.5, 3.75, 5, 10, 20, 40; 70.7v: 2.5, 10, 20, 30, 40; 100v: 5, 10, 20, 40

"X"-TRA VALUE FEATURES

Rotating Bell Triple Lock Security "Power Stripe" Code Quality Materials

"X"-TRA EASY INSTALLATION

Universal base mounts 1-gang, 2-gang or 4" sq. E.O. boxes.

Includes 30 watt tap @ 70.7V.

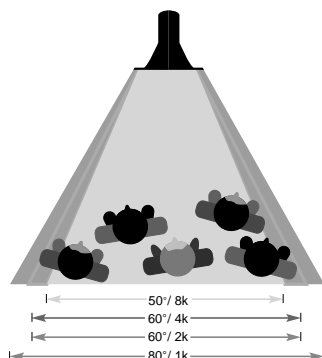
"X"-TRA PREDICTABILITY

Clear Messaging and Music Consistent Beamwidth Control

Fewer Speakers to Provide Quality Communications

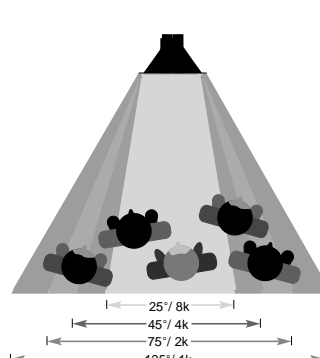
APX BEAMWIDTH

Controlled Coverage
Across a Wide Freq. Range



CONVENTIONAL BEAMWIDTH

Collapsing Coverage
Across a Wide Freq. Range



* Typical exponential coverage illustrated



APX40TN



Bell rotates in 15° increments



Triple-lock horn-to-base mounting



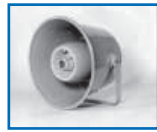
Indoor/Outdoor Music Loudspeakers



WR-5AT



WT-15T



WT-30T

7.5, 15, & 30 WATT LOUDSPEAKERS

WR/WT Series. Environment-resistant loudspeaker series provides the advantages of full-range music reproduction, high-efficiency voice/signal transmission and long-lasting service reliability. Recommended for background and high-power music installations in stadiums, arenas, malls and shopping centers, hotels, schools, lobbies, pools and recreational facilities. Choice of 7.5, 15 and 30 Watt continuous power handling models with transformer option. Assemblies are housed within a metal, weather-resistant enclosure. Finished in gray epoxy.

MODEL	POWER RATING	NOMINAL FREQ.	SOUND LEVEL		DISPERSION**	DIMENSIONS
			PEAK	RP/1M*, 1W/1M		
WR-5AT	7.5W***	375Hz-10kHz	111dB	105dB, 97dB 400-7800Hz±5dB	95°	6" Dia. x 4" D
WT-15T	15W****	375Hz-10kHz	113dB	120dB, 107dB 200-1000Hz±5dB	40° x 55°	13 1/4" W x 10" D
WT-30T	30W*****	375Hz-10kHz	120dB	114dB, 104dB 250-7800Hz±5dB	95°	15 Dia. x 11 1/4" D

* Measured at Rated Power, 1 Meter (avg)
 ** Angle Shown for -6dB, 2 kHz Octave Band
 *** 7.5 Watt Xfmr. Power Taps: 70.7V: 0.65, 1.25, 2.5, 5.0, 7.5
 **** 15 Watt Xfmr. Power Taps: 70.7V: 1.25, 2.5, 5.0, 7.5, 15

***** 30 Watt Xfmr. Power Taps: 70.7V: 2.5, 5.0, 7.5, 15, 30
 ▲ WT-30T measured at lowest tap/1M



Intercom, Paging & Alarm Loudspeakers



GA-30T



SC-15



RCMR-15



MO-2

UTILITY PAGING RE-ENTRANT HORN LOUDSPEAKERS

GA Series. Double re-entrant 15 and 30 Watt utility horns offer economical and efficient sound penetration for general paging, music, and intercom use. Models GA-15T and GA-30T feature a combination 25/70.7V line transformer with multi-position knob for selecting power taps. In addition, loudspeakers include wiring for an 8 Ohm connection. Units are ideally suited for installations in commercial buildings, sports facilities and any applications where direct sound coverage is desired. GA Series models are constructed of weather resistant, high-impact plastic for indoor/outdoor installations and feature an adjustable surface mounting bracket to allow for multiple vertical and horizontal positioning. Loudspeakers are finished in gray.

MODEL	POWER RATING	NOMINAL FREQ.	SOUND LEVEL		DISPERSION**	IMPEDANCE	DIMENSIONS
			PEAK	RP/1M*, 1W/1M			
GA-15T	15W	400Hz-6kHz	120dB	112dB, 103dB 500-3000Hz ±5dB	80°	***	7 1/2" Dia x 9 3/4" D
GA-30T	30W	350Hz-7.5kHz	123dB	118dB, 106dB 500-3000Hz ±5dB	60°	****	10" Dia x 12" D

* Measured at Rated Power, 1 Meter (avg)
 ** Angle Shown for -6dB, 2kHz Octave Band

*** 15 Watt Xfmr. Power Taps: 25V: 0.5, 1, 2, 4, 8; 70.7V: 1, 2, 4, 8, 15
 **** 30 Watt Xfmr. Power Taps: 25V: 1, 2, 4, 8, 15; 70.7V: 2, 4, 8, 15, 30

COMPACT, HIGH-EFFICIENCY LOUDSPEAKERS

SC Series. Cost-effective series with versatile application provides directional sound projection and spot coverage in indoor and outdoor intercom and paging systems or functions as an extension loudspeaker to alarm systems and communication receivers. Standard Model SC-15 is an 8 Ohm speaker and may be used with an external 25/70.7V transformer (order separately). Includes detachable swivel bracket. Weather-resistant construction. Finished in light beige epoxy.
 - Also available SC15-45 (45 Ohm) version.

MODEL	POWER RATING	NOMINAL FREQ.	SOUND LEVEL		DISPERSION**	IMPEDANCE	DIMENSIONS
			PEAK	RP/1M*, 1W/1M			
SC-15	15W	600Hz-6kHz	117dB	114dB, 103dB 600-6000Hz ±5dB	95°	8 Ohm	6 1/4" Dia x 6 1/2" D

* Measured at Rated Power, 1 Meter (avg)

** Angle Shown for -6dB, 2kHz Octave Band

UTILITY AND MOBILE COMMUNICATIONS LOUDSPEAKERS

RCMR-15. Accessory loudspeaker enhances voice intelligibility-range for communications, radio-telephone, electronic hailer and alarm system installations in marine and vehicular applications. Series meets the element and vibration resistance requirements of industrial, service and utility vehicles and is recommended for area paging, intercom and low-power siren applications. Voice coil impedance is 8 Ohm. Model RCM-15 has a round projector and includes the Omni-Purpose® mounting bracket for vertical and horizontal positioning and rigid 90° angle platform-mount.

MO-2. Compact, 8 Ohm unit is designed for signal transmission in vehicular alarm, CB, marine radio, and transceiver installations where concealed mounting or minimum aerodynamic obstruction is desired.

MODEL	POWER RATING	NOMINAL FREQ.	SOUND LEVEL		DISPERSION**	IMPEDANCE	DIMENSIONS
			PEAK	RP/1M*, 1W/1M			
RCMR-15	15W	350Hz-13kHz	120dB	106dB, 105dB 700-5800Hz ±5dB	120°	8 Ohm	7 1/2" Dia x 7 1/4" D
MO-2	25W	4000Hz-15kHz	122dB	106dB, 105dB 550-13500Hz ±5dB	85°	8 Ohm	6 1/8" W x 8" H x 4 3/16" D

* Measured at Rated Power, 1 Meter (avg)

** Angle Shown for -6dB, 2kHz Octave Band



BI-AXIAL HORN WITH GIMBAL MOUNT

BIA-100. Features a twin reflex air column for controlled directivity and an exponential bell for constant sound dispersion and linear frequency response emphasis. Unit is designed for use with compression driver units in high-power voice, music, and signaling systems including service and mass transit centers, industry and commerce, educational, and institutional applications. Patented gimbal mount for surface or flange mounting provides labor-saving installation and horizontal/vertical positioning adjustment. Non-resonant foam construction is suitable for indoor and outdoor application. Finished in non-glare matte black.

HORN FOR EXPONENTIAL SOUND DISPERSION

CJ-46. All-purpose unit is a low silhouette, directional horn for sound and signaling installations where wide-area dispersion and maximum sound and audibility are required. Recommended for use with compression driver units in indoor and outdoor applications including community warning systems, sports, and leisure facilities, industry, and commerce. Mounting bracket for vertical, horizontal, or stacked positioning is heavy-duty steel with positive lock. Weatherproof bell is all-fiberglass construction finished in black.

HORNS FOR UNIFORM DIRECTIONAL SOUND PROJECTION

DR Series. Circular horns offer clean and uniform reflex sound path for high-efficiency penetration of voice or music over distance and ambient noise. Designed for use with compression drivers in sound and signaling installations including industrial plants, retail service establishments, sports facilities, church towers, amusement parks, and mass transit terminals. Includes heavy duty "U" shaped mounting bracket. All-metal construction. Finished in gray baked epoxy.

SOUND PRESSURE LEVELS OF REFLEX HORNS WITH ATLAS SOUND COMPRESSION DRIVERS (Measured at Full Power at 1M)					
MODEL	DISPERSION	AIR COLUMN LENGTH	LOW END CUT-OFF	BELL SIZE	LENGTH
BIA-100	130° x 60°	2¾"	180Hz	21"W x 10¼"H x 10¾" D	19¼"
CJ-46	120° x 60°	4½"	115Hz	22" x 12"	17"
DR-32	95°	2½"	190Hz	16½" Dia.	12½"
DR-42	85°	3½"	140Hz	20" Dia.	16"
DR-54	75°	4½"	115Hz	26" Dia.	19"
DR-72	65°	6½"	85Hz	31" Dia.	28"

SOUND PRESSURE LEVELS OF REFLEX HORNS WITH ATLAS SOUND COMPRESSION DRIVERS (Measured at Full Power at 1M)			
MODEL	MODEL PD-30T	MODEL PD-VH/PD-5VT	MODEL PD-60/PD-60T
BIA-100	125dB	126dB	128dB
CJ-46	125dB	128dB	129dB
DR-32	124dB	124dB	130dB
DR-42	125dB	125dB	131dB
DR-54	125dB	127dB	132dB
DR-72	127dB	129dB	135dB



BIA-100



CJ-46



DR-42

TWO



High-Efficiency Compression Driver Units



PD-30T



PD-5VT



PD-5VH



PD60AT



YDA-TH

30, 40, AND 60 WATT DRIVERS

PD Series. Competitively priced compression drivers provide accurate sound reproduction, optimum intelligibility and dependable performance in commercial sound, high-power music and public address loudspeaker systems. Models are equally suited for application with Atlas Sound projector horns or as replacement drivers for use with standard 1 $\frac{3}{8}$ " - 18 male thread horns.

MODEL	POWER RATING	PLANE WAVE FREQ. RESPONSE	LOW FREQ. LIMIT @ FULL POWER	SOUND LEVEL (± 5 dB)	IMPEDANCE
PD-30	30W	300-3,900Hz (± 5 dB)	500Hz	113.6 (avg) 300 - 3,900Hz	8 (Nom.)
PD-30-16					16 (Nom.)
PD-30T					**
PD-5VH	40W	110-4,100Hz (± 5 dB)	250Hz	110.7 (avg) 110 - 4,100Hz	16 (Nom.)
PD-VT	40W	190-4,200Hz (± 5 dB)	300Hz	111.2 (avg) 190 - 4,200Hz	***
PD60A	60W	300-3,700Hz (± 5 dB)	300Hz	112.7 (avg) 100 - 3,700Hz	16 (Nom.)
PD60AT					****

* Measured on a plane wave tube at 1 mW

*** 40 Watt Xfmr. Power Taps: 70.7V: 2.5, 5, 10, 20, 40

** 30 Watt Xfmr. Power Taps: 70.7V: 1.8, 3.7, 7.5, 15, 30

**** 60 Watt Xfmr. Power Taps: 70.7V: 2.5, 5, 10, 20, 40, 60

Universal Driver-To-Horn Adapter

YDA-TH. Dual adapter for combining two compression drivers to one sound projector. (Two 1 $\frac{3}{8}$ "-18F thread to 1 $\frac{3}{8}$ "-18M thread)



Explosion-Proof Loudspeakers



HLE-1 Driver



HLE-1 Driver mounted to HLE/MLE-30 Horn



HLE-1 Driver mounted to HLE/MLE-32 Horn

30 AND 60 WATT LOUSPEAKERS

HLE and MLE Series. These UL and CSA (HLE Models only) listed loudspeakers are specified for high-efficiency transmission of voice and/or electronic signals within explosive or combustible atmospheres and environments. Drivers and projector horns may be configured to comply with specific environment classification groups within Class 1 ratings. HLE Series drivers are 60 Watts. MLE Series are 30 Watts. Both are offered with an internally mounted line transformer (-T) or without. To meet UL Standards for loudspeakers in distributed applications, models with factory-mounted projector of molded plastic with wide-angle dispersion. Projector horn Model HLE/MLE-30 is a reflex-type sound projector of molded plastic with wide-angle dispersion. Model HLE/MLE-32 is an all-metal circular reflex horn with directional sound distribution pattern. Drivers and projector horns are ordered and shipped separately. For performance accuracy, specifications are listed for assembled configurations. All models are equipped with $\frac{1}{2}$ " conduit access and adjustable mounting bracket. Horn Model HLE/MLE-30 with a mounted driver measures 14" W x 6" H x 17 $\frac{1}{2}$ " D. Model HLE/MLE-32 horn with a mounted driver is 16 $\frac{1}{2}$ " Dia. x 21 $\frac{1}{2}$ " D.

For Canadian Use: CSA listed product (HLE 2 Series) are available in both Class 2 (Explosion Proof and Dust Ignition Proof Electrical Equipment) and Class 3 (Explosion Proof). Please call for details. Atlas Sound explosion proof speakers meet division 2 criteria.

Model Combination		POWER RATING	FREQ. RESP.	SOUND LEVEL*	SENSITIVITY**	DISPERSION	IMPEDANCE	INTERNAL XFMR***
DRIVER WITH HORN								
★ HLE-1(T)	HLE/MLE-30	60W Cont.	250 Hz-12 kHz	109dB	-18dBm	120° x 60°	16 Ohm	60W (Model T-18)
★ HLE-3(T)	HLE/MLE-30			108dB				
★ MLE-1(T)	HLE/MLE-30	30W Cont.	300 Hz-14 kHz	107dB	-21dBm	120° x 60°	8 Ohm	30W (Model T-20)
★ MLE-3(T)	HLE/MLE-30			106dB				
★ HLE-1(T)	HLE/MLE-32	60W Cont.	190 Hz-12 kHz	1112dB	-18dBm	95°	16 Ohm	60W (Model T-18)
★ HLE-3(T)	HLE/MLE-32			111dB				
★ MLE-1(T)	HLE/MLE-32	30W Cont.	200 Hz-10 kHz	110dB	-20dBm	95°	8 Ohm	30W (Model T-20)
★ MLE-3(T)	HLE/MLE-32			110dB				

* Measured at 1 watt, 1 meter.

** As microphone: re 10 dynes/cm²

*** T versions only

UNDERWRITERS' LABORATORY LISTINGS		
MODELS	CLASS/GROUP	FOR ATMOSPHERE CONTAINING
HLE-1, MLE-1	Class 1/Group C & D	Gas Atmospheres (Including Ethyl, Ether, Gasoline Naptha, Alcohols, Butane, Propane)
HLE-3, MLE-3	Class 1/Group B, C, D	Gas Atmospheres (Including Ethyl, Ether, Gasoline Naptha, Alcohols, Butane, Propane), plus Hydrogen, Gas and Vapor, (Manufactured Gas)

Model Series HLE and MLE are listed under UL 913, UL 1604, UL 2279, UL 1203, and NFPA 503.





15, 30 AND 60 WATT TRANSFORMERS

Atlas Sound constant-voltage line-matching transformers are designed for use with compression driver type loudspeakers. U.S. made for dependable performance and service reliability, all units provide low insertion loss and cost-efficient power handling. (Transformers for cone loudspeakers are listed in Section 1, page 16).

T10. 15 watt transformer includes external "power reminder" indicator to reference the power setting in use. Primary: 8K, 4K, 2K, 1K, 670, 325, 180, 90, and 45 Ohm. 70.7 Volt taps: .65, 1.25, 2.5, 5, 7.5, 15. Secondary: 4, 8, and 16 ohm.

T18. 60 Watt transformer without weatherproof housing. Primary: 2K, 1K, 500, 250, 125, 85, and 45 Ohm. 70.7 Volt power taps: 2.5, 5, 10, 20, 40, 60. Secondary: 4, 8 and 16 Ohm.

T20. 30 Watt transformer. Primary: 2500, 1300, 666, 333, 167, 89, and 45 Ohm. 25 Volt power taps: 1.89, 3.7, 7, and 15. 70.7-Volt power taps: 1.8, 3.7, 7.5, 15 and 30. Secondary: 8 Ohm.

CABLE/CONDUIT ADAPTERS

Vandal-resistant cover plates for armored cable and conduit connection are designed for use with environment-resistant, double re-entrant loudspeakers. BX Series mounts standard male threaded pipe with 14 threads per inch. Construction is cast aluminum.

MODEL	MOUNTS
BX-1A	APC-30 Series, APW-30T
BX-2A	AP-15, AP-15T, APW-15T
BX-3A	APF-15, APF-15T

MOUNTING ACCESSORIES

APBK. Replacement Omni-Purpose® swivel bracket, gray.

MK-2. Mounting kit for installation of APF Series flange loudspeakers to 8" diameter loudspeaker baffles.

APF SERIES BAFFLES, ENCLOSURES & MOUNTING RINGS

L20-100. Round grille. CRS construction with baked white epoxy finish. Mounts APF-15 or APF-15T. 11" (279mm) Dia. x 3/8" (10mm) Deep.

L20-101. Square grille. CRS construction with baked white epoxy finish. Mounts APF-15 or APF-15T. 10 1/2" Sq. (267mm) x 3/8" (5mm) Deep.

L20-201. Recessed 20-ga. CRS enclosure for L20-100 grille. Includes combination conduit knockouts for access. Undercoated to prevent resonance. 8 5/8" (217mm) Dia. x 6" (152mm) Deep.

L20-213. Square surface enclosure for mounting L20-101 grille. Conduit knockouts and mounting holes located in top. White epoxy finish. 10 1/2" Sq. (270mm) x 6" (152mm) Deep.

L20-220. Round mounting ring for L20-100 grille. 8 5/8" (217mm) Dia. x 3/8" (16mm) Deep.

L20-222. Same as L20-220 with mounting ears for 24" (610mm) lay-in tile.

193-8-6. Cost-efficient enclosure is provided in two depths and furnished with four compound conduit knockouts for standard screw-mount baffle installation. Construction is CRS, undercoated and finished in black epoxy.

FAMT-6. Mounting ring/adaptor allows a 6" cone or APF Series loudspeaker to mount an 8" enclosure and/or grille.



T-10



T-20



T-18



BX-1A



BX-2A



BX-3A



L20-100
Shown with
APF-15T and BX-3



L20-101
Shown with
APF-15T



L20-201



L20-213



L20-220



FAMT-6